

All based at an activity centre nearby.

Tree climb (1½ hour session, max 8 people)
With instructor – £80 per session

The climbing & abseiling crag
(1½ hour session, max 8 people)
With instructor - £80 per session

Low ropes course (1½ hour session, max 9 people)
With instructor - £70 per session

Crate tower challenge (1½ hour session, max 8 people)
With instructor - £80 per session

Archery (1 hour session, max 12 people)
With instructor - £80 per session

Canoeing (1½ hour session, max 8 people)
With instructor - £80 per session

Kayaking (1½ hour session, max 8 people)
With instructor - £80 per session

Mountain Bikes (1½ hour session, max 8 people)
With instructor - £80 per session

Nightline (1 hour session, max 10 people)
With instructor - £60 per session
This doesn't have to be done at night!

Rafting (2 hour session, max 10 people)
With instructor - £80 per session
Includes buoyancy aid and pioneering equipment

Team Building (1 hour session, max 12 people)
With instructor - £60 per session

Grass sledging (1 hour session)
£35 per set of six sledges

Indoor bouldering wall (1 hour session, max 8 people)
£35 per session

Indoor curling (1 hour session)
(If Ribble Lodge is free, as it requires a wooden floor)
£20 per session

Orienteering course
(three different courses, of varying levels)
£1.50 per person

Games Equipment costs for 2009

- **Boules set** £4 per hour
- **Circus skills set** £24 per group per half day
- **Parachute** (two sizes available)
£7 per hour per group
- **Table tennis** £4 per hour
- **Badminton** £4 per hour
- **Croquet set** £4 per hour
- **Kwik cricket set** £4 per hour
- **Rounders set** £4 per hour
- **Short tennis** £4 per hour
- **Scooters (set of five)** £8.50 per hour
- **Games bag, balls, ropes, bats, hoops etc**
£8 per group per half day
- **Netball posts/volleyball net/play area/goal post**
£2 deposit for hire of ball
- **Orienteering pack** (to set up your own course)
£12 per half day
- **Pioneering equipment**
£16 per half day per session

Outdoor board games

- **Connect Four**
- **Giant chess**
- **Giant draughts**
- **Jenga (hi tower)**
£4 each per hour

Indoor Games

- **Giant dominoes**
- **Giant snakes and ladders**
- **Clock golf**
- **Garden skittles**
- **Horse shoes**
- **Lawn toss**
- **Pick a stick**
- **Quoits**
- **Giant Ludo**
- **Carpet bowls**
- **Hopscotch**
£10 per hour

Conference Menus & Extras...



Please select one of the **Buffet Menus** below, which will be included in your Conference Delegate Rate.

Buffet A
Selection of Cold Meats
Roasted Vegetable and Feta Pasta Salad
Caesar Salad with Bacon & Croutons
Mixed Leaf Salad
Freshly Baked Bread
Cajun Potato Wedges
Selection of Desserts

Buffet B
A Selection of Hot Steak & Onion and Cajun Chicken Ciabattas
Chunky Chips
Coleslaw
Mixed Leaf Salad
Selection of Desserts

Other Extras

Fresh Fruit and Basket	£12.00
Freshly brewed Coffee & Tea with Biscuits.....	£1.50
Muffins and Danish Pastries.....	£2.50
Jam & Cream Scones and Parkin.....	£2.75
Selection of Bacon & Sausage Sandwiches or Rolls.....	£3.95

Business Service Charges

Photocopying: Black/White	20p per A4
.....	30p per A3
Transparencies.....	£1 per copy
Fax (UK) First Page: £1.50	Additional Pages: £1.00
Fax (International).....	£4.00 per page
Fax (incoming).....	no charge

Restaurant Lunch

If you have the time, why not choose two courses and coffee or tea from our Lunch Menu?

Served in our fine Dining Room where you can relax and be waited on, before returning to your meeting ready to continue.

celebrate
reunite rejoice...

Tariff Information...



The following prices are inclusive of VAT

	Day Delegate Rate	24hr Delegate Rate
Meeting Room	£28 per person per day	£106 per person per day
	Day	¹ / ₂ Day/Evening
Meeting Room	Johnathan's Restaurant £100	£65
Syndicate Room	£65	£45

Room hire for less than 8 delegates **£100**

Equipment Available	Day Rate Only
Projector	£95
Screen	£15
TV & DVD	£25
Additional Flip Charts	£10

Day Delegate Rate Includes	24hr Delegate Rate Includes
Morning Coffee Pastries & Muffins Buffet Lunch with Coffee Menu A or B Afternoon Tea & Biscuits Full Table Refreshments Wireless Internet Access Value Added Tax at the prevailing Rate	Morning Coffee Pastries & Muffins Buffet Lunch with Coffee Menu A or B Afternoon Tea & Biscuits Full Table Refreshments 3 Course Dinner with Coffee Overnight Accommodation Full Traditional Breakfast Value Added Tax at the prevailing Rate

Room Available From 9.00am - 5.00pm unless prior arrangements have been made

Meeting Rooms & Sizes...



The Ballroom

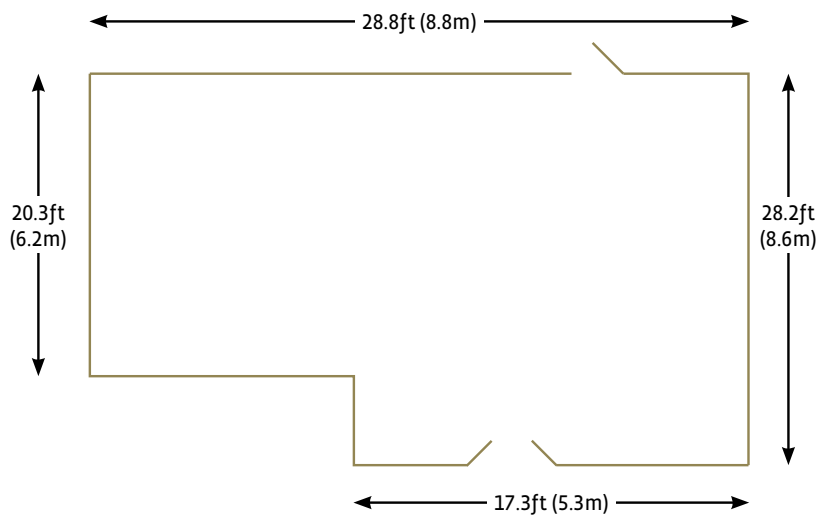
Situated in the main hall with views and access onto the gardens and bowling green.

This room is equipped to hold:

- 24 Boardroom Style

Alternatively this room could be set in the following:

- 38 U-Shape
- 30 Classroom Style
- 50 Theatre Style
- 45 Private Dining



Johnathan's

Also situated in the main hall with space for refreshments to be served in the room itself.

This room is equipped to hold:

- 36 Boardroom Style

Alternatively this room could be set in the following:

- 50 U-Shape
- 38 Classroom Style
- 90 Theatre Style

